

Supplementary Appendix

Supplement to: “Heterogeneity in the Effects of Food Vouchers on Nutrition Among Low-Income Adults: A Quantile Regression Analysis”

Supplemental Table S1. Baseline characteristics by study group

	Total (N=359)	Study Group			
		FV-only weekly (N = 86)	FV-only monthly (N = 90)	Unrestricted weekly (N = 92)	Unrestricted monthly (N = 91)
Baseline FV intake	1.1 (0.8)	1.0 (0.9)	1.1 (0.7)	1.2 (0.8)	1.0 (0.8)
Study group					
FV-only weekly	86 (24%)				
FV-only monthly	90 (25%)				
Unrestricted weekly	92 (26%)				
Unrestricted monthly	91 (25%)				
Female	236 (66%)	56 (65%)	61 (68%)	62 (67%)	57 (63%)
Age, in years	51.5 (13.5)	52.2 (13.1)	50.7 (13.4)	52.4 (14.1)	50.9 (13.5)
Race/ethnicity					
Non-Hispanic White	133 (37%)	30 (35%)	29 (32%)	37 (40%)	37 (41%)
Non-Hispanic Black	96 (27%)	24 (28%)	26 (29%)	22 (24%)	24 (26%)
Asian	63 (18%)	17 (20%)	18 (20%)	14 (15%)	14 (15%)
Hispanic	56 (16%)	14 (16%)	14 (16%)	13 (14%)	15 (16%)
Other or undefined	11 (3%)	1 (1%)	3 (3%)	6 (7%)	1 (1%)
Education					
Less than high school degree	29 (8%)	7 (8%)	6 (7%)	8 (9%)	8 (9%)
High school degree	205 (57%)	54 (63%)	52 (58%)	54 (59%)	45 (49%)
College or higher	125 (35%)	25 (29%)	32 (36%)	30 (33%)	38 (42%)
Ever redeemed at farmer's market	148 (42%)	33 (39%)	40 (47%)	42 (47%)	33 (37%)
Household size					
1	241 (67%)	53 (62%)	62 (69%)	65 (71%)	61 (67%)
2-3	85 (24%)	21 (24%)	20 (22%)	18 (20%)	26 (29%)
4 or more	33 (9%)	12 (14%)	8 (9%)	9 (10%)	4 (4%)

Note: Data are presented “n (%)” for discrete covariates and “mean (SD)” for continuous covariates.

Supplemental Table S2. Association between study group and the change in FV intake using quantile regression at the 25th, 50th, and 75th percentiles

	Change in FV Intake, by quantile		
	25 th percentile	50 th percentile	75 th percentile
FV-only weekly	0.240** (0.001, 0.479)	0.369*** (0.067, 0.671)	0.021 (-0.357, 0.399)
FV-only monthly	0.084 (-0.137, 0.305)	0.104 (-0.183, 0.391)	0.143 (-0.302, 0.588)
Unrestricted weekly	-0.033 (-0.203, 0.137)	0.152 (-0.105, 0.409)	0.156 (-0.172, 0.484)
Unrestricted monthly	0.019 (-0.212, 0.250)	0.091 (-0.152, 0.334)	-0.106 (-0.509, 0.297)

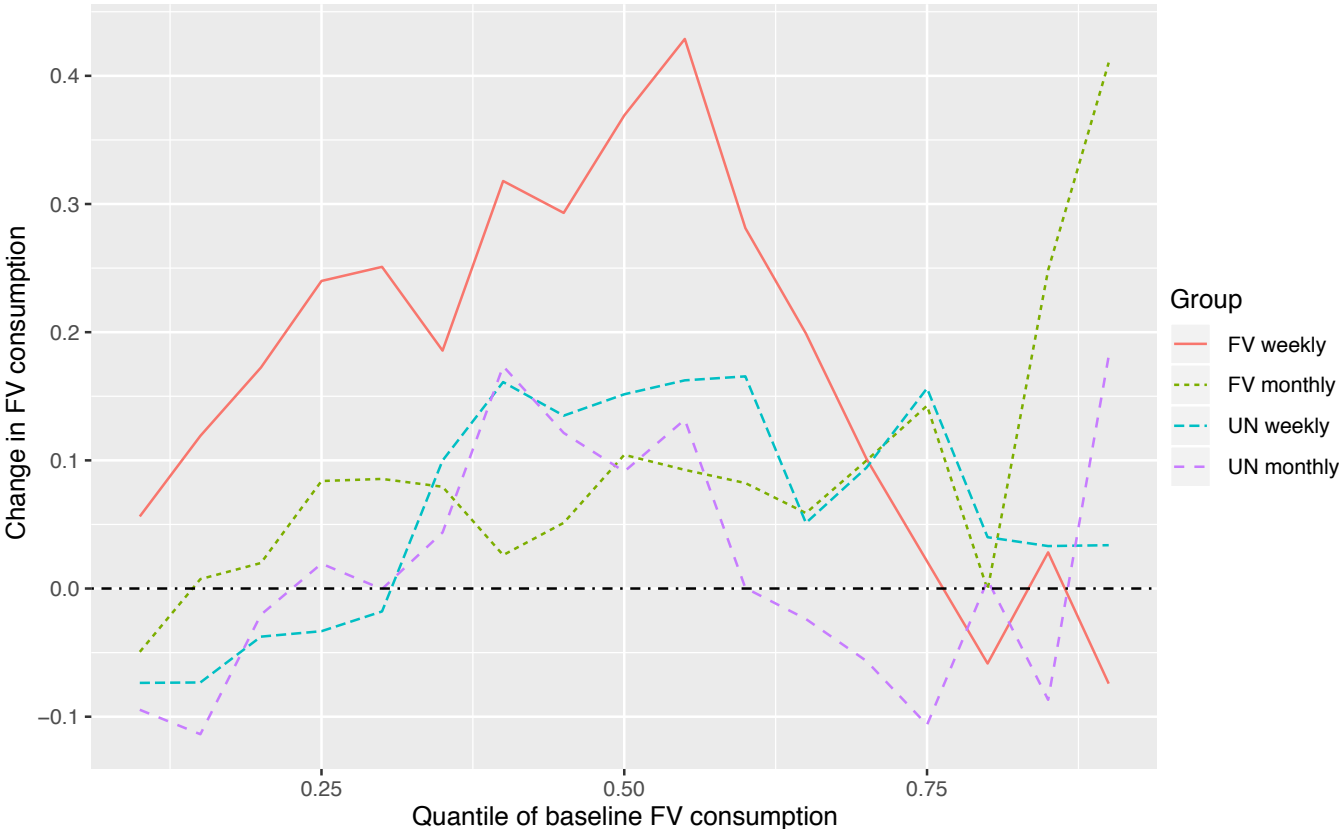
Note: Quantile regression estimates of the change in FV intake at the 25th, 50th, and 75th percentiles. 95% confidence intervals are presented in parentheses. Statistical significance: * p<0.1; ** p<0.05; *** p<0.01.

Supplemental Table S3. Predictors of change in FV intake using OLS and quantile regression

	OLS (1)	Quantile regression		
		25 th percentile (2)	50 th percentile (3)	75 th percentile (4)
Baseline FV intake	-0.135 (-0.454, 0.184)	-0.194 (-0.507, 0.118)	0.042 (-0.232, 0.315)	0.068 (-0.405, 0.541)
Baseline FV intake squared	-0.094* (-0.188, 0.001)	-0.138** (-0.255, -0.020)	-0.169*** (-0.263, -0.075)	-0.141 (-0.375, 0.093)
Voucher group				
FV-only weekly (ref.)				
FV-only monthly	0.124 (-0.115, 0.364)	0.028 (-0.174, 0.230)	0.143 (-0.034, 0.320)	0.067 (-0.204, 0.338)
Unrestricted weekly	-0.05 (-0.281, 0.180)	0.015 (-0.149, 0.179)	0.011 (-0.143, 0.164)	-0.179 (-0.421, 0.063)
Unrestricted monthly	0.047 (-0.183, 0.277)	0.055 (-0.130, 0.241)	0.168 (-0.034, 0.369)	-0.1 (-0.351, 0.151)
Female	-0.081 (-0.262, 0.100)	0.012 (-0.141, 0.164)	-0.039 (-0.174, 0.096)	-0.023 (-0.196, 0.149)
Age, in years	0.005 (-0.002, 0.012)	0.005 (-0.001, 0.011)	0.002 (-0.004, 0.008)	0.006* (-0.001, 0.012)
Race/ethnicity				
Non-Hispanic White (ref.)				
Asian	0.069 (-0.177, 0.315)	0.061 (-0.180, 0.302)	0.085 (-0.118, 0.288)	0.308** (0.058, 0.558)
Hispanic	0.044 (-0.213, 0.301)	-0.127 (-0.362, 0.108)	-0.059 (-0.229, 0.110)	0.077 (-0.146, 0.300)
Non-Hispanic Black	0.005 (-0.220, 0.230)	-0.1 (-0.262, 0.062)	-0.014 (-0.219, 0.190)	0.184** (0.011, 0.358)
Other/not available	0.037 (-0.511, 0.586)	0.168 (-0.145, 0.482)	0.057 (-0.266, 0.379)	-0.045 (-0.355, 0.264)
Education				
< HS degree (ref.)				
HS degree	-0.113 (-0.423, 0.197)	-0.147 (-0.431, 0.136)	-0.182 (-0.458, 0.095)	-0.12 (-0.275, 0.034)
College or higher	0.136 (-0.196, 0.469)	-0.07 (-0.381, 0.241)	0.004 (-0.308, 0.316)	0.203 (-0.070, 0.476)
Farmer's market	0.005 (-0.005, 0.015)	0.010* (-0.001, 0.021)	0.009*** (0.003, 0.015)	0.009* (-0.001, 0.019)
Household size	-0.103** (-0.187, -0.020)	-0.037 (-0.111, 0.037)	-0.078*** (-0.133, -0.022)	-0.098** (-0.176, -0.019)
Constant	0.27 (-0.345, 0.885)	-0.008 (-0.540, 0.524)	0.236 (-0.306, 0.777)	0.348 (-0.149, 0.846)
Observations	326	326	326	326

Note: 95% confidence intervals are in parentheses. Statistical significance: * p<0.1; ** p<0.05; *** p<0.01

Supplemental Figure S1. Association between baseline and change in FV intake, by study group



Note: This figure shows quantile regression estimates of the association between baseline FV intake and the change in FV intake during the trial.